



# **Workspace Manager**

## **Quickstart Guide**

# 1 Workspace Manager

## Introduction

The purpose of this guide is to demonstrate the use of the workspace VisualFSM Workspaces. A Workspace is where measurement projects are created and maintained. The Community and Personal Editions of VisualFSM have 10 Workspaces, In the other versions Workspaces can be created as required, The scope of this guide is the Community and Personal Editions

The Workspaces are totally independent however measurement projects may be copied or cloned between them. See the Software/System Management Quickstart Guide for information about these function,

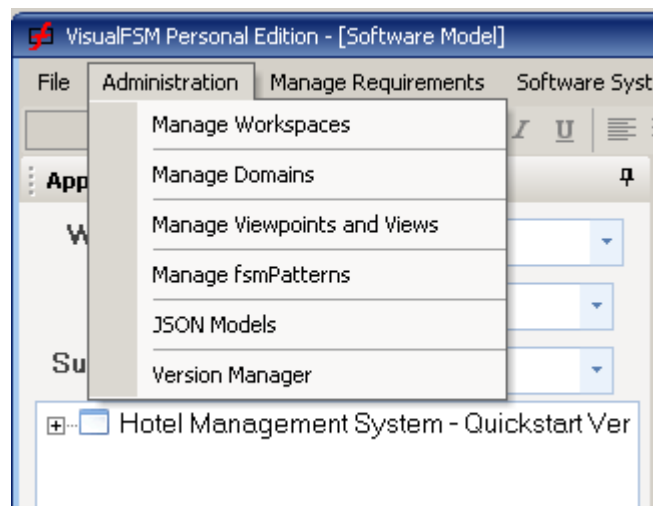
## Workspace Management

The Community Edition is delivered with 2 Work Spaces, VisualFSM is delivered with 10 Workspace and they are named **My Space 1** through **My Space 10**. There is an addition workspace called **Sandpit** which is used to try things out; to "play" in so to speak

The use of the Workspaces is determined by the user, for example you may want different Workspaces for each Stage of the Measurement process . or a different Workspace for each Project. The naming of the Workspaces may nor suit these purposes. The Workspace Manager allows the user to Change the Workspace Names and optionally to describe their use.

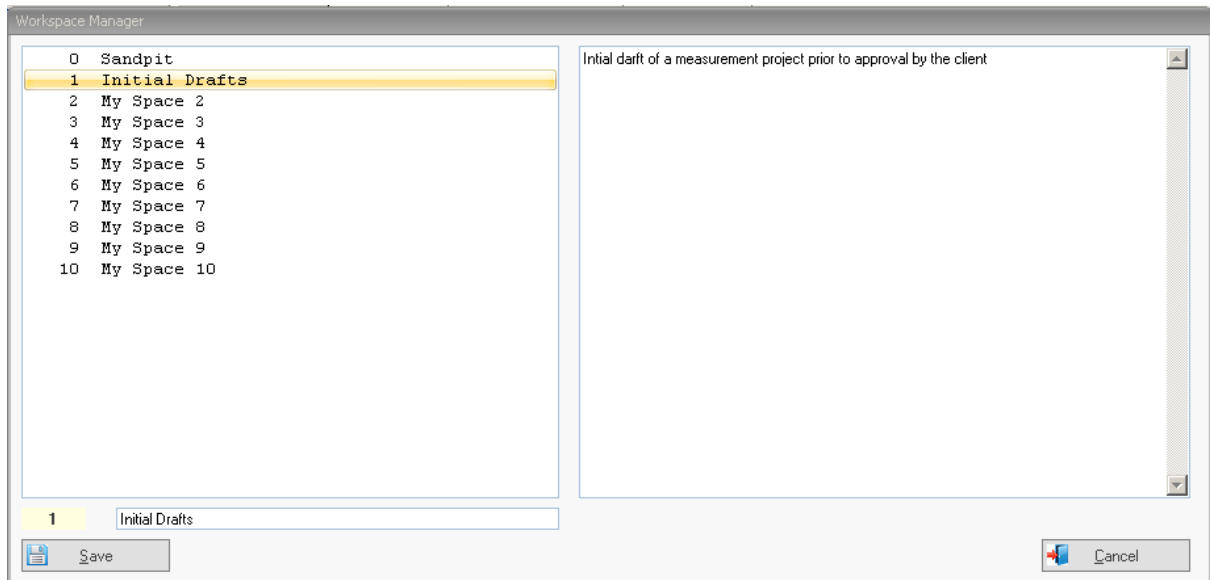
## Change Workspace Name

To open the Workspace Manager select **Administration** from the mean menu then **Manage Wokspaces** from the drop-down menu.



Click on the Workspace in the Navigator, the current name will be displayed

- Enter the new name
- Enter description of the usage of the Workspace if required
- Press the **Save** button



The Explorer Workspace selector on the main screen will be updated

