



Software System Manager

Quickstart Guide

1 Introduction

Software System Management

The Menu/Help/Software Management menu item provides access to the functions to manage the Software System after it has been created in or imported into a Workspace. The available functions are:

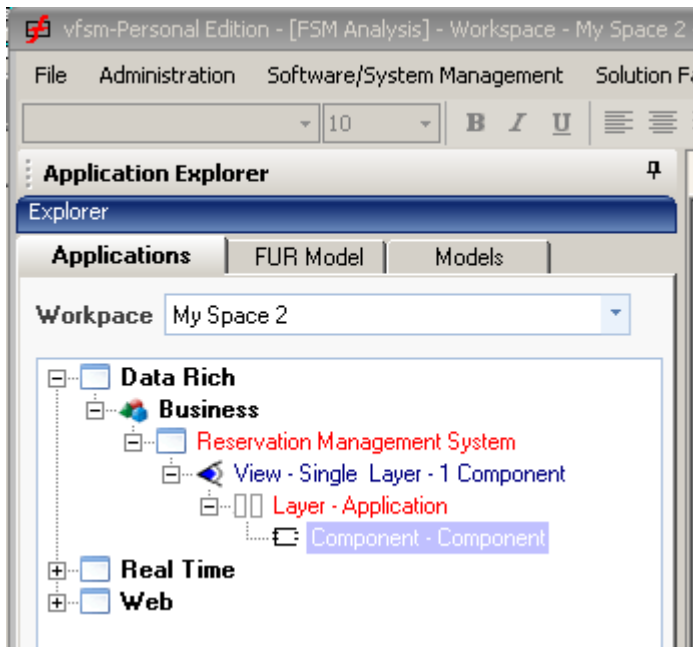
- **Cloning the software.** A clone has the same content as the original, but all the elements have different unique reference numbers. Giving it a separate identity means that it can reside in the same workspace as the original. Useful for incremental analysis
- **Copying the software.** A copy has the same content as the original, and the same unique reference number for its elements. Generally used as a backup or to create versions at different stages of the measurement process, e.g. for training.
- **Export VDIF to JSON.** Converts the project into a VDIF File in JSON format and save it to a file. Being a text file it can be sent over the internet.

Note: only available when registered

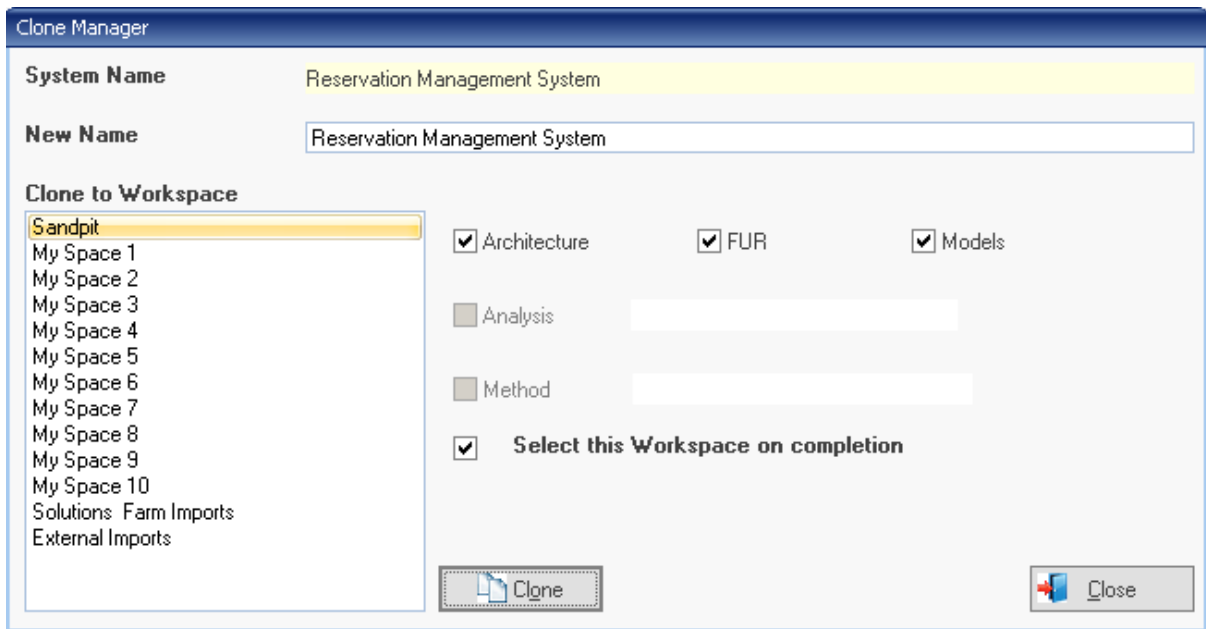
- **Import VDIF from JSON.** Loads a VDIF file in JSON format and converts it to the VisualFSM model

2 Cloning the Software

Open the software to be cloned and navigate to the Component Level



Select the **Software/System Management** Tab this will bring up the **Clone Manager** dialog



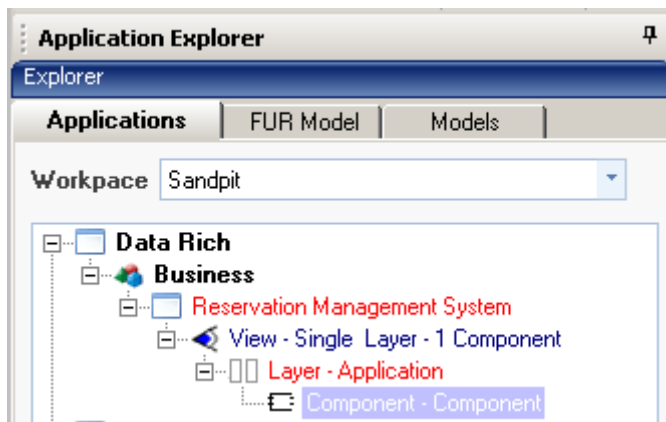
Software can be cloned to any workspace include the one it is in as it will be re-reference. If it is cloned to the same workspace it must have a different name, otherwise you need not re-name but it is good practice to do so

- Select a Workspace to Clone to, in this the Sandpit
- Select the elements to Clone

The check-boxes indicate the elements of the software that are to be cloned. as we navigated to the component level we are offered th option to clone the Architecture, FUR Model and the Function. Data and User Models. All the boxes are checked by default, uncheck as required.

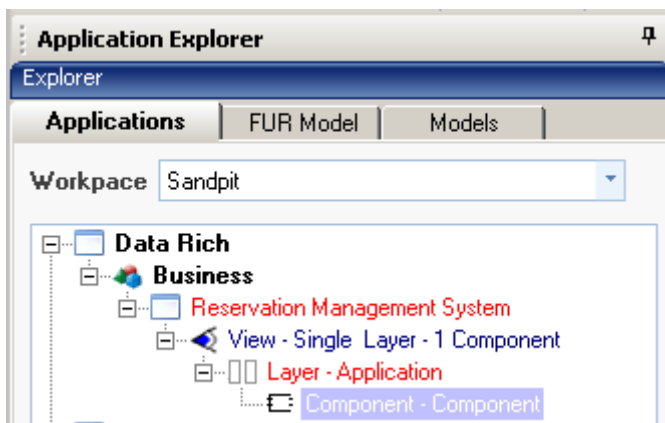
If cloning to another Workspace you can switch to that workspace on completion by checking the box.

- The box is checked by default, we shall leave it like that
- Press the **Clone** button. After a short delay the dialog will close and the the chosen Workspace will open, and the cloned software will load

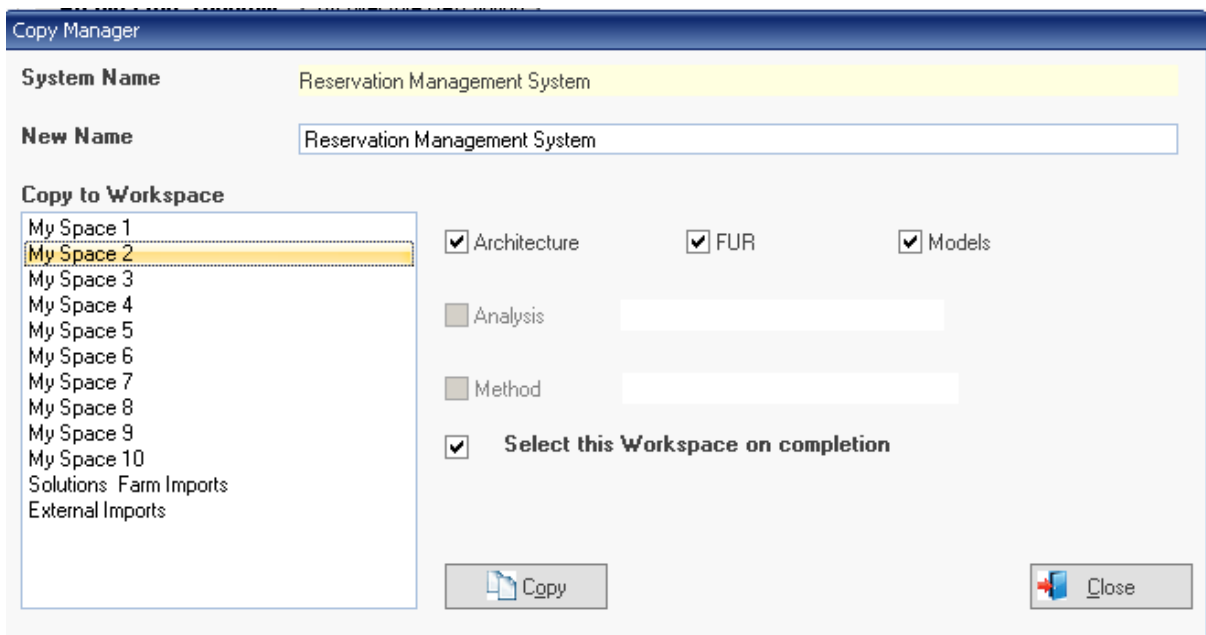


3 Copying the Software

Open the software to be cloned and navigate to the Component Level

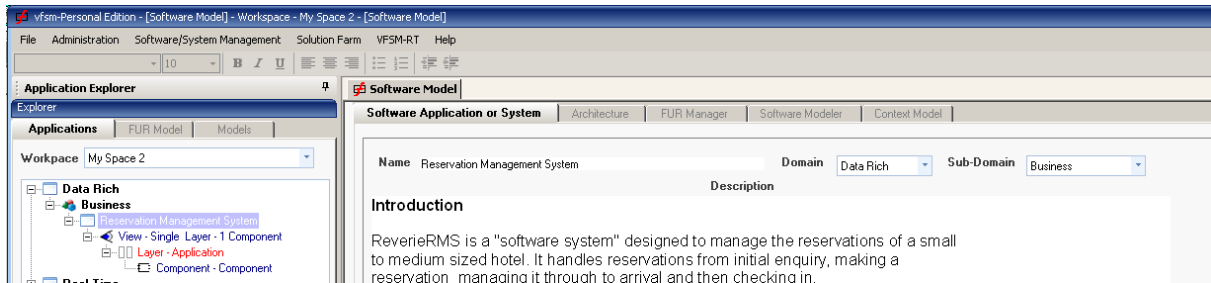


Select the **Software/System Management** Tab and select the Copy Software option from the drop-down menu. this will bring up the **Copy Manager** dialog



Software can be copied to any workspace except the one it is in as will have the same references. This is prevented by removing it from the available Workspaces

- Select Workspace 2
- Leave the **Select this Workspace...** checked
- Press the **Copy** button. After a short delay the dialog will close and the the chosen Workspace will open, and the copied software will load

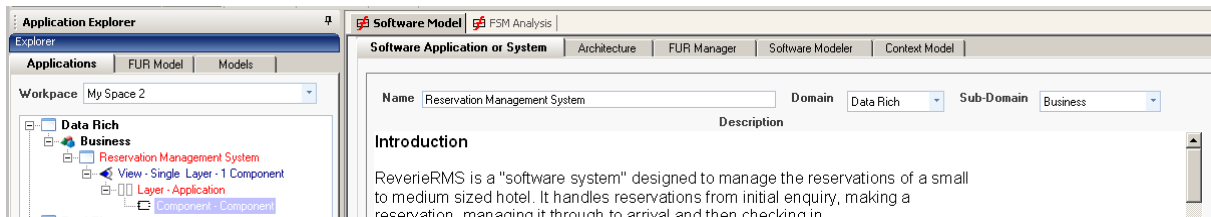


4 Exporting the Software

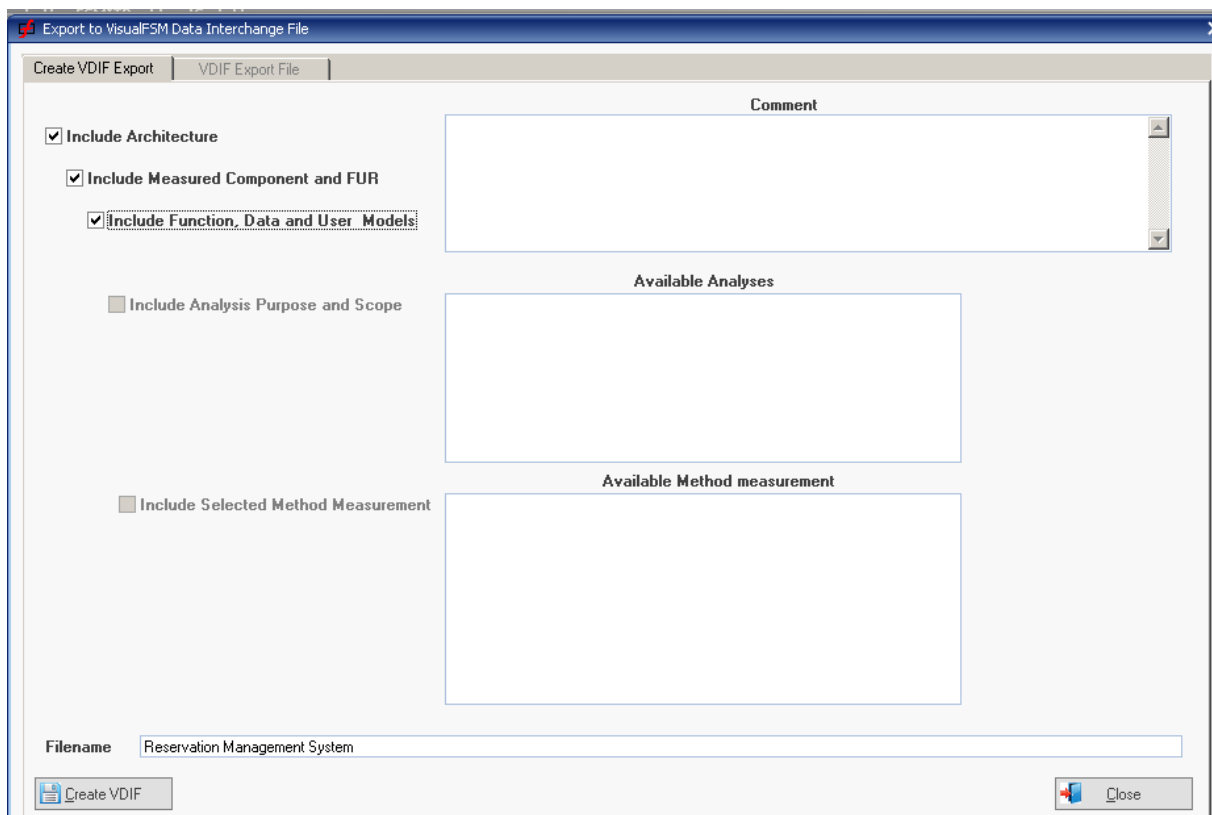
One of the aims of the Community Edition to enable users to exchange projects and ideas with each other. To do this VisualFSM converts its model to a special format call the **VisualFSM Data Interchange File** (VDIF)

The chosen format for this file is **JSON**. This was chosen as it the most common format for this purpose, and being text only, it can be transmitted over the internet.

In this demonstration we shall export the software just copied to Workspace 2



Select the **Software/System Management** Tab and select the **Export VDIF to JSON File** option from the drop-down menu. this will bring up the **Export** dialog



- Select the elements to Export

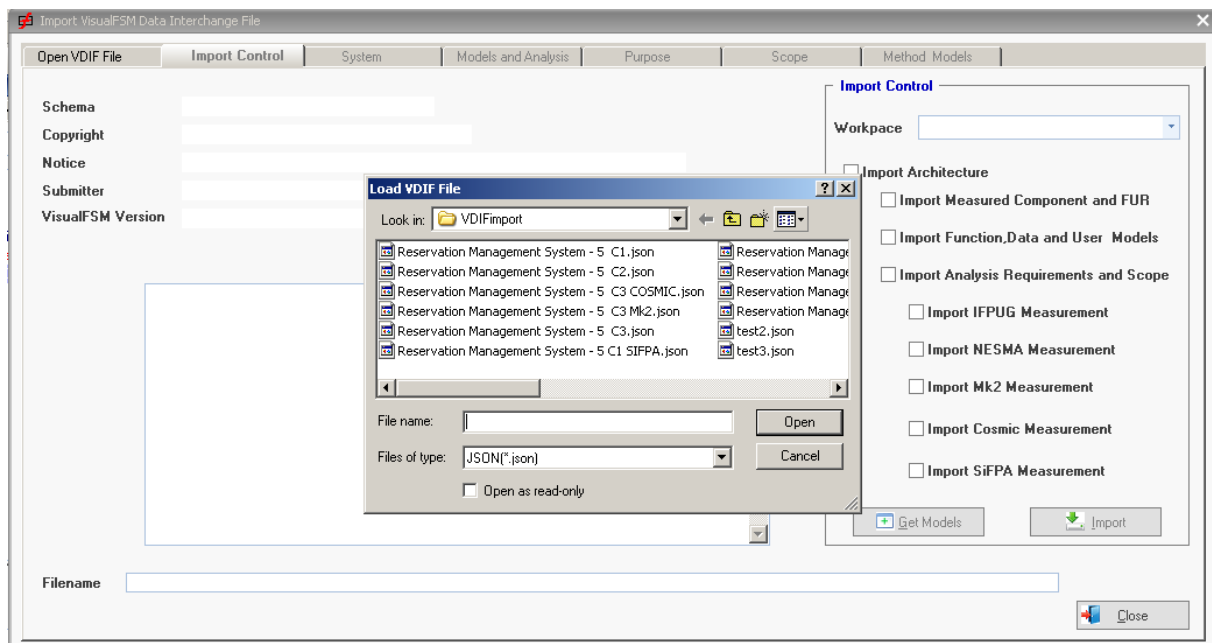
The check-boxes indicate the elements of the software that are to be exported. as we navigated to the component level we are offered th option to clone the Architecture, FUR Model and the Function. Data and User Models. All the boxes are checked by default, uncheck as required.

Press the **Create VDIF** button. This will convert the selected element to JSON format which will be displayed for information

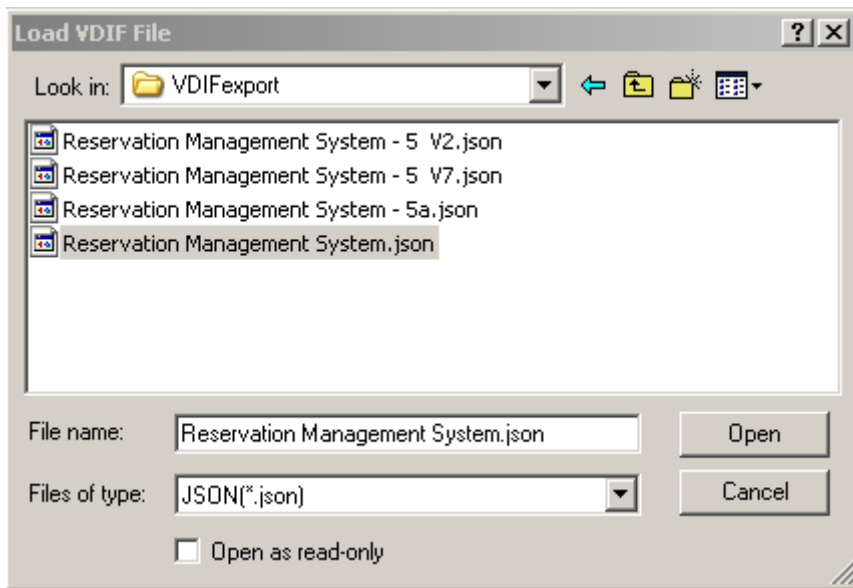
5 Importing the Software

To demonstrate how to Import a previously exported file we shall import that file

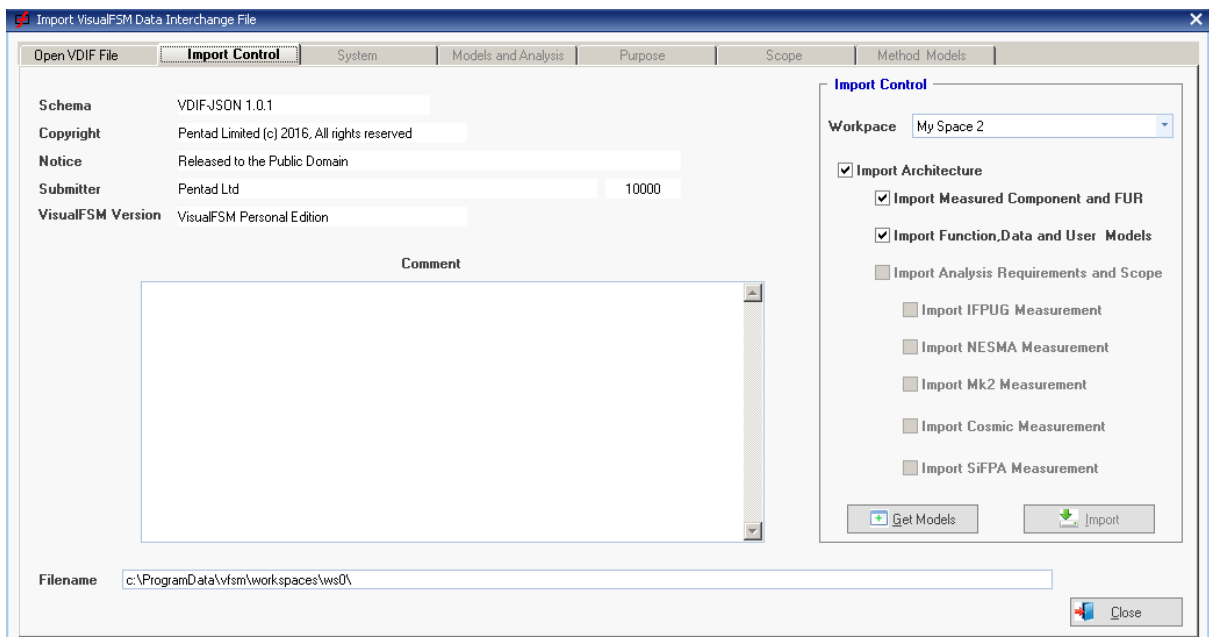
Select the **Software/System Management Tab** and select the **Import VDIF from JSON File** option from the drop-down menu. this will bring up the **Import** dialog and the standard Load dialog pre-set to the default Import location.

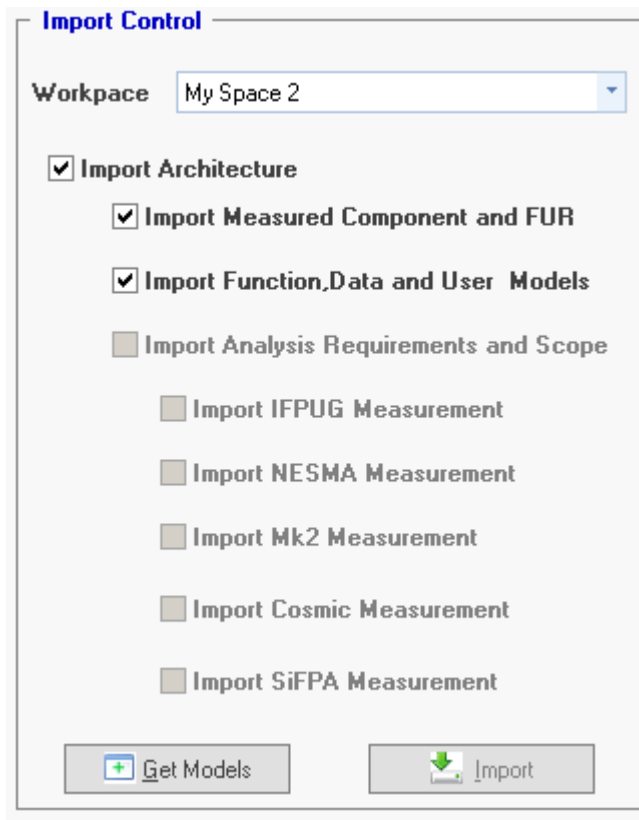


To import the file just exported, switch directories and select the file name and press the **Open** button

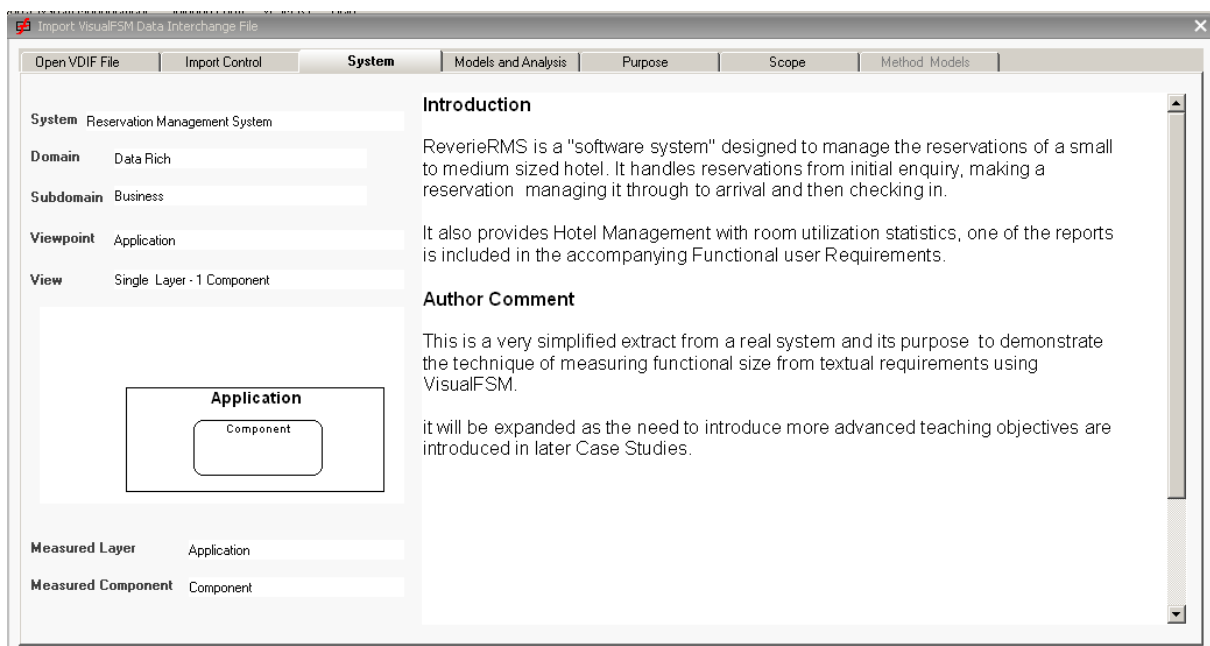


The VDIF File will be converted to the VisualFSM models, and the models available for import are indicated by the Check Boxes



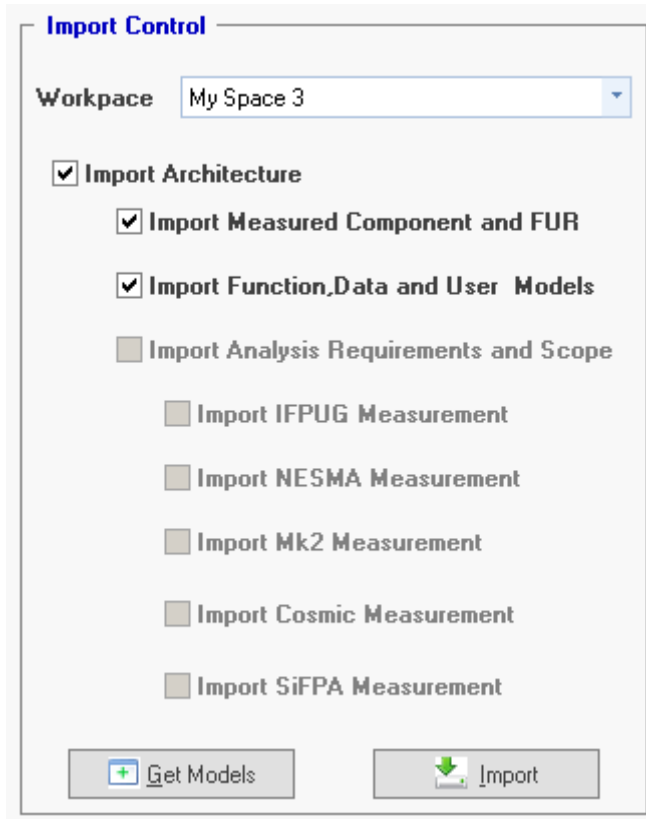


Press the Get Models button. This will extract the selected models and they can be previewed by selecting the top Tabs



For example this is the System tab

Switch back to the Import Control Tab, select Workspace 3 as the destination and Import the model by press the **Import** button



The project is imported



